

# MEADOWBANK PARK REGIONAL PLAYGROUND

**Background:**  
In alignment with the Meadowbank Park Masterplan (adopted November 2019), Meadowbank Park has been selected as a suitable location for a new regional playground.

It is City of Ryde's intention that it will be a destination playground both physically and socially inclusive for children of all abilities and their carers. The playground will allow children of all ages to explore, imagine, create, learn and have fun playing together.

**Context:**  
The proposed regional playground will be located adjacent to an existing skate park in Meadowbank Park, with the main entry and exit from Ross Smith Avenue. Additional entries and exits are proposed from Constitution Road West as well as the existing carpark within the western portion of the park. The playground has been designed to easily link in with the existing skate park, site features, pathway networks and access points located within the park.

**Design:**  
The intention of the playground is to provide play opportunities for a range of physical, intellectual and emotional abilities that allow for participation, inclusion, accessibility and overall equity and dignity.

The theme for the playground aims to relate to the existing landscape values and context of Meadowbank Park, including connection to water (Parramatta River), vegetation and the green open space areas.

The playground will be fenced to provide a safe and contained environment for children. The pathway network within the playground fence line provides clear, direct and accessible circulation throughout the space.

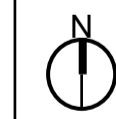
The design includes various play zones including:  
-Active play zones with a range of equipment types and challenges;  
-Sand play with interactive sand play elements;  
-Nature play zone with discovery and imagination elements and  
-Feature water play zone with splash pad and interactive water play elements.

The design includes a number of picnic shelters along with fixed seating for long and short-term use adjacent the various play zones. Shade sails in addition to shade trees are proposed throughout the space to assist in keeping the active and passive zones cool and comfortable.

The playground design considers both accessible and general parking, including three (3) new accessible spaces proposed within the existing western carpark, along with two (2) new mini bus drop of locations off Ross Smith Avenue. The proposed pathway networks allow for easy connections to other existing park areas within the park.



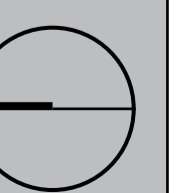
LOCALITY PLAN



- LEGEND**
- PROPOSED PEDESTRIAN MOVEMENT ENTRY/ EXIT
  - EXISTING SHARED CYCLEWAY
  - EXISTING CREEK
  - PLAYGROUND FENCE
  - MAIN PLAYGROUND ENTRY/ EXIT
  - EXISTING BRIDGE CROSSING



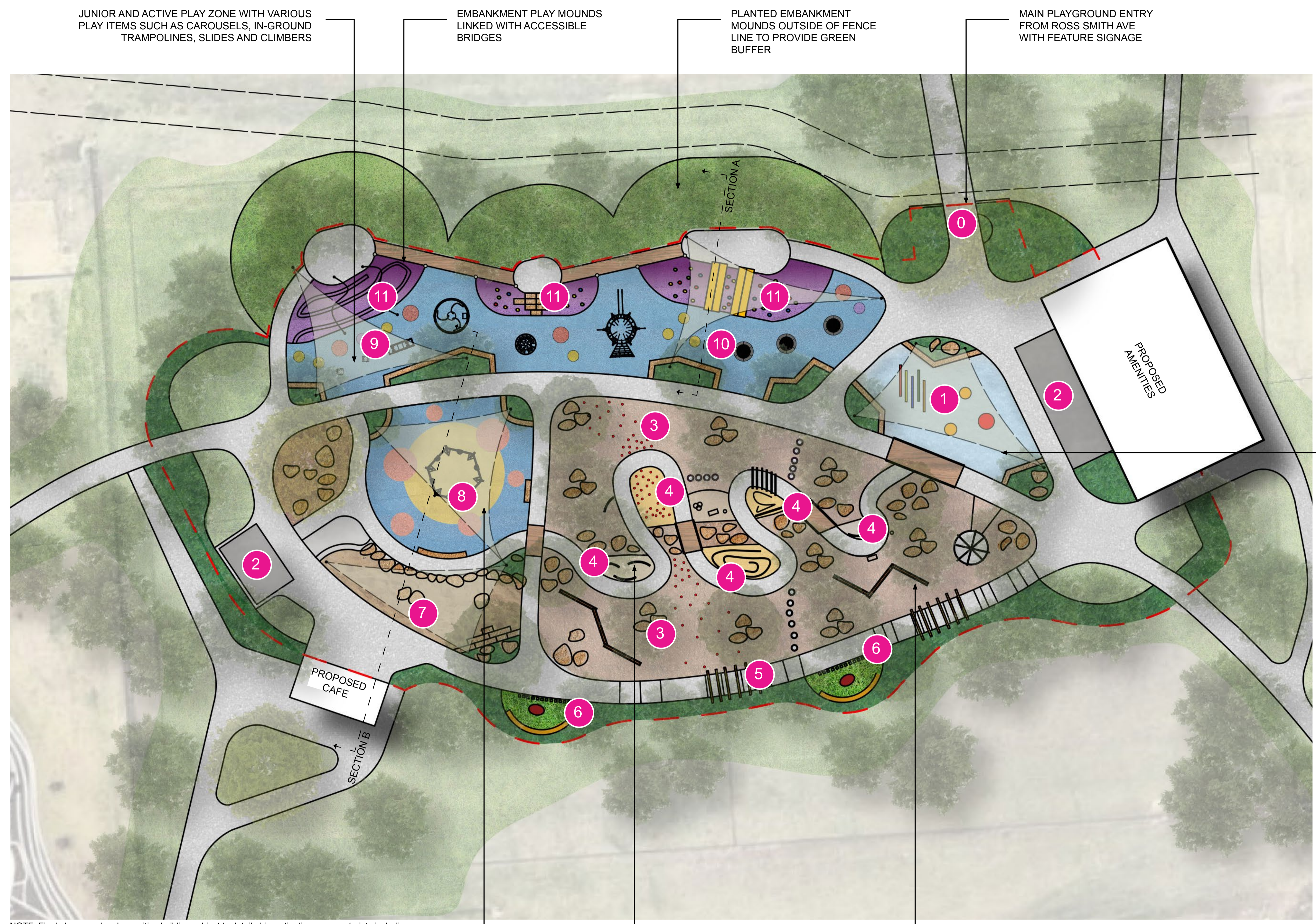
NOTE: Final playground and amenities building subject to detailed investigations on constraints including stormwater infrastructure.





- LEGEND KEY
- 0. FEATURE PLAYGROUND ENTRY
  - 1. SPLASH PAD WITH INTERACTIVE WATER PLAY ELEMENTS
  - 2. SHADE STRUCTURE WITH PICNIC SETTINGS
  - 3. NATURE PLAY DISCOVERY ZONE WITH VARYING EQUIPMENT CHALLENGES
  - 4. PLAY PODS OFF MEANDERING PATH WITH SENSORY ELEMENTS
  - 5. UNDULATING BIKE TRACK
  - 6. CHILL OUT ZONES
  - 7. SANDPIT WITH INTERACTIVE SAND PLAY
  - 8. 6-WAY SWING ZONE
  - 9. JUNIOR PLAY ZONE WITH CRAWL MOUNDS FOR AGES 0-4
  - 10. ACTIVE ZONE WITH FIXED EQUIPMENT FOR AGES 4-12
  - 11. EMBANKMENT MOUNDS WITH VARYING EQUIPMENT AND BRIDGE CROSSINGS

SPLASH PAD 125m<sup>2</sup> WITH VARIOUS INTERACTIVE ELEMENTS AND ADJACENT SHELTER



JUNIOR AND ACTIVE PLAY ZONE WITH VARIOUS PLAY ITEMS SUCH AS CAROUSELS, IN-GROUND TRAMPOLINES, SLIDES AND CLIMBERS

EMBANKMENT PLAY MOUNDS LINKED WITH ACCESSIBLE BRIDGES

PLANTED EMBANKMENT MOUNDS OUTSIDE OF FENCE LINE TO PROVIDE GREEN BUFFER

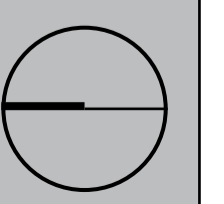
MAIN PLAYGROUND ENTRY FROM ROSS SMITH AVE WITH FEATURE SIGNAGE

NOTE: Final playground and amenities building subject to detailed investigations on constraints including stormwater infrastructure.

6-WAY SWING ZONE TO PROMOTE SOCIAL INTERACTION

PLAY PODS WITH SENSORY ELEMENTS INCLUDING SOUND, TOUCH AND INTERACTIVE PANELS

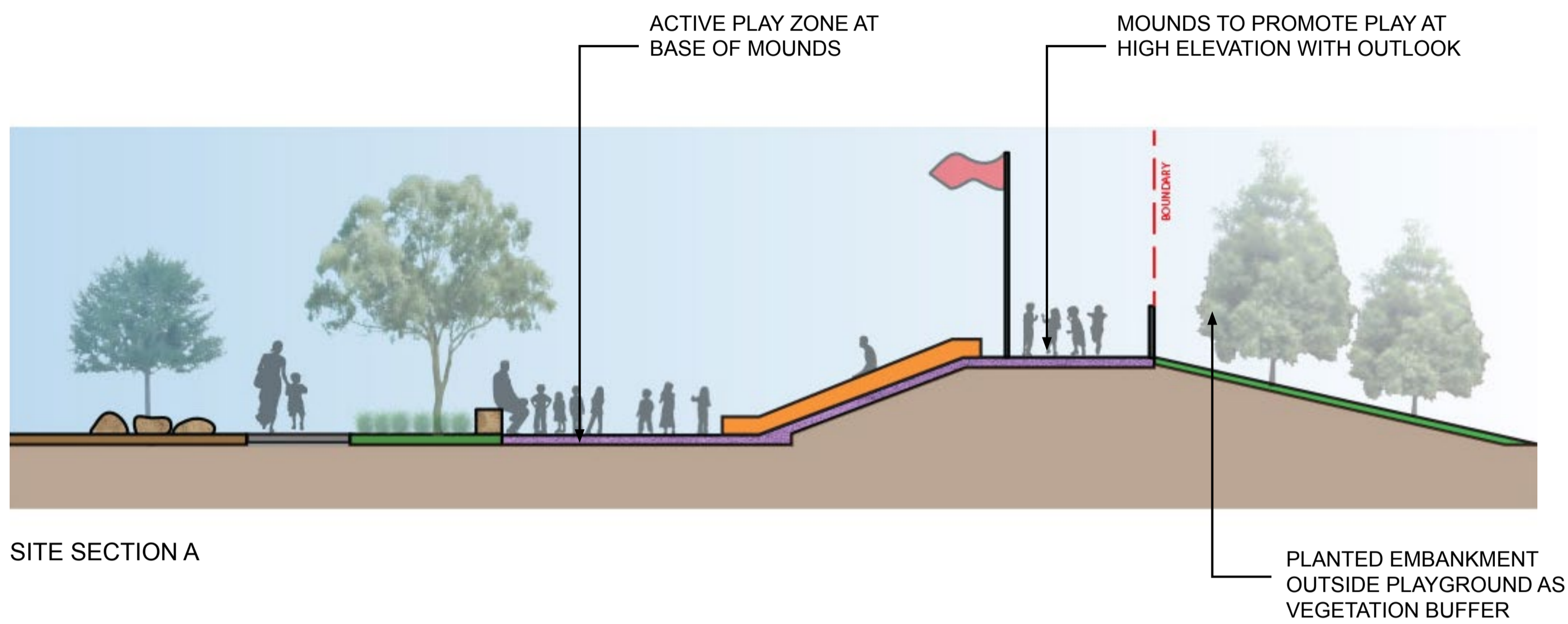
NATURE PLAY DISCOVERY ZONE WITH FIXED EQUIPMENT INCLUDING BALANCE BEAMS, STEPPERS, TEEPEE



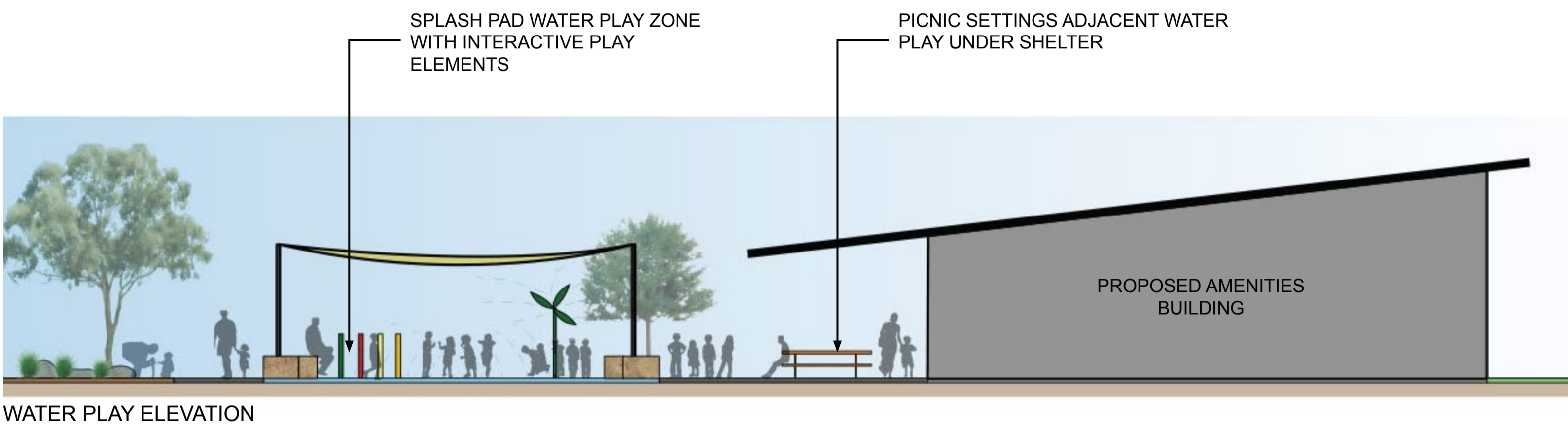




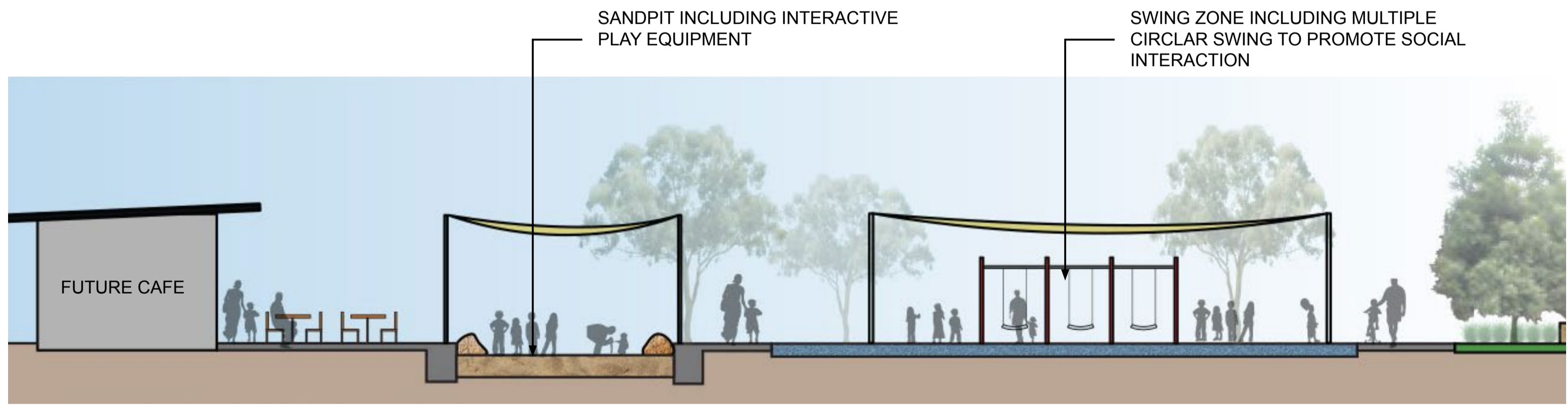
PLAY MOUND ELEVATION



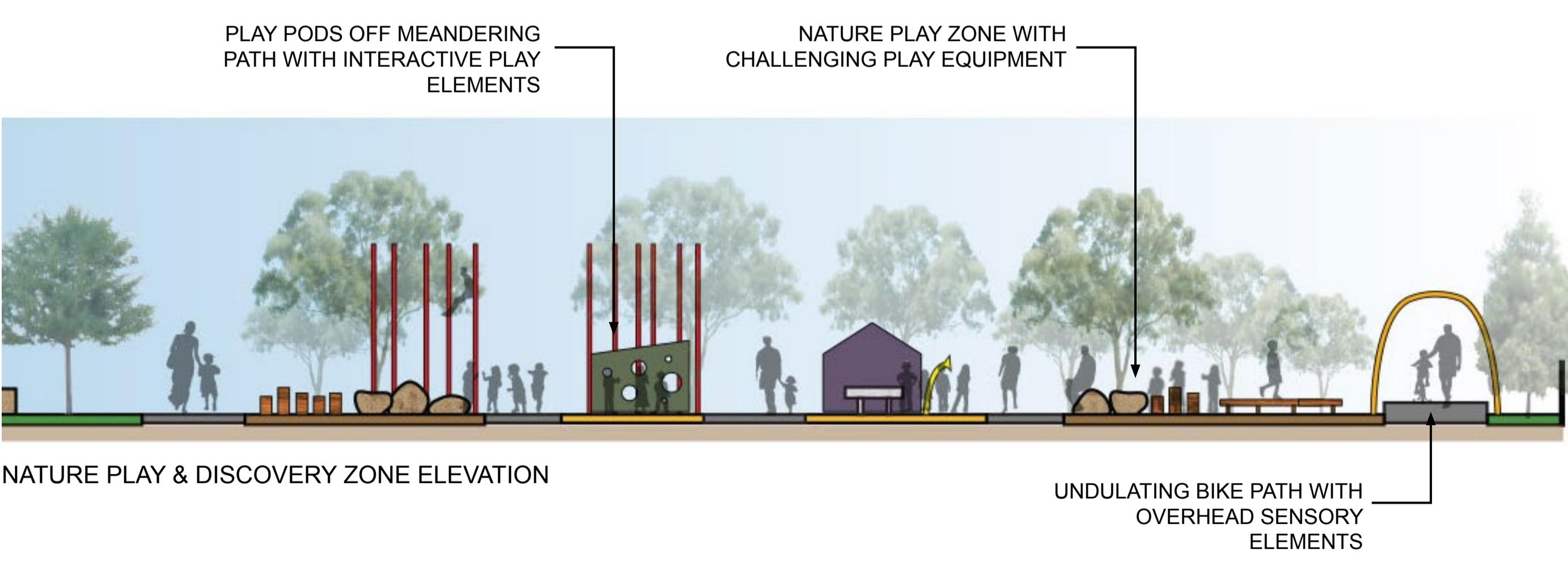
SITE SECTION A



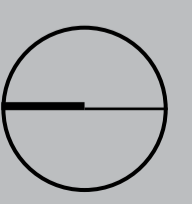
WATER PLAY ELEVATION



SITE SECTION B



NATURE PLAY & DISCOVERY ZONE ELEVATION





0 FEATURE PLAYGROUND ENTRY



1 SPLASH PAD ZONE



2 PICNIC SHELTER WITH SEATING



3 NATURE PLAY DISCOVERY ZONE



4 INTERACTIVE SENSORY PODS

5 UNDULATING BIKE TRACK



6 CHILL OUT ZONES



7 SANDPIT WITH INTERACTIVE PLAY



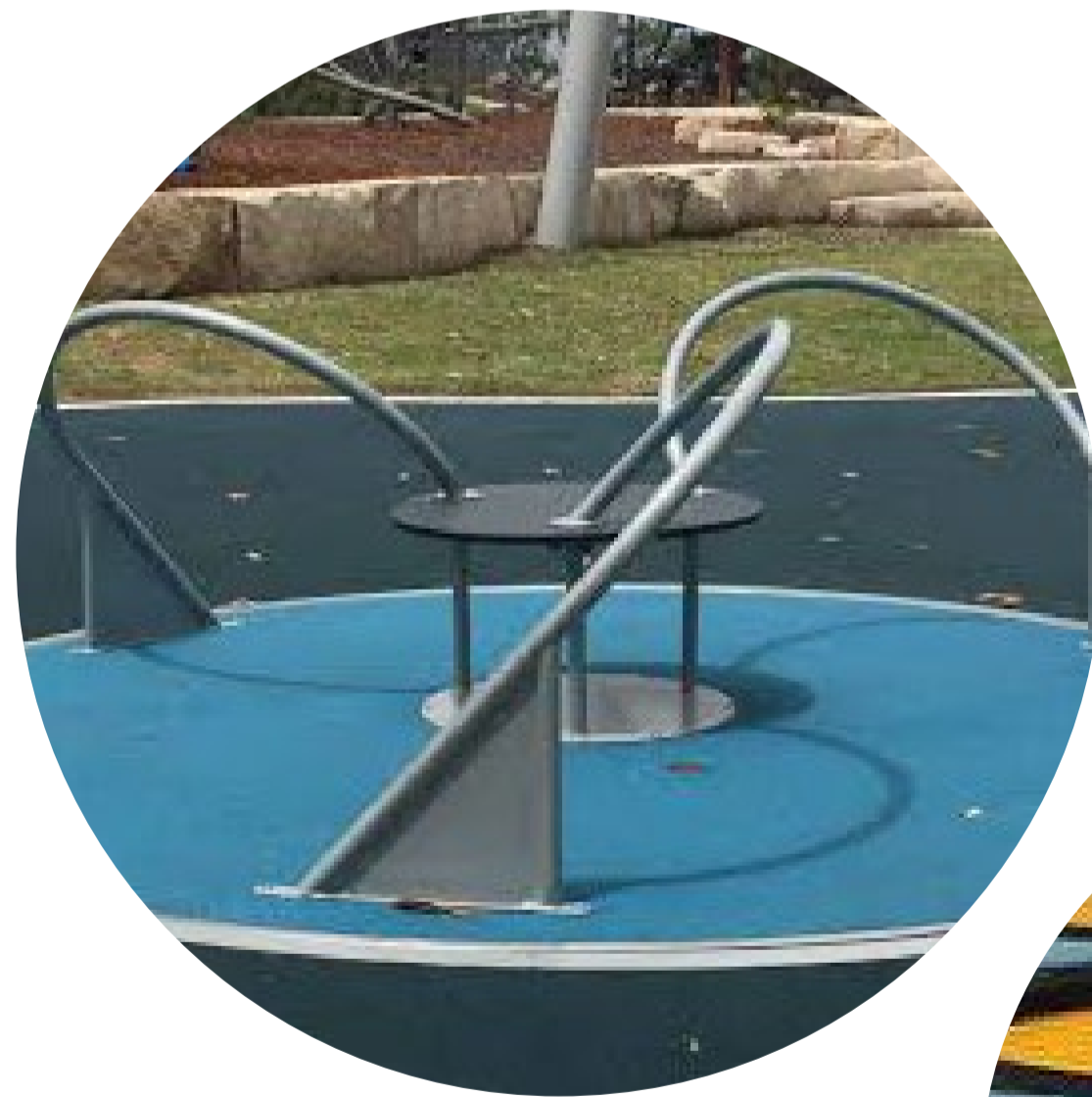
8 6-WAY SWING ZONE



9 JUNIOR PLAY ZONE



11 EMBANKMENT PLAY MOUNDS



10 ACTIVE PLAY ZONE

